

LF 150

FA 4x2 rigid, 08t



Engines

LF 150 PX-5 (112 kW / 152 hp)
 LF 180 PX-5 (135 kW / 184 hp)
 LF 210 PX-5 (157 kW / 213 hp)
 LF 220 PX-7 (164 kW / 223 hp)

GVM

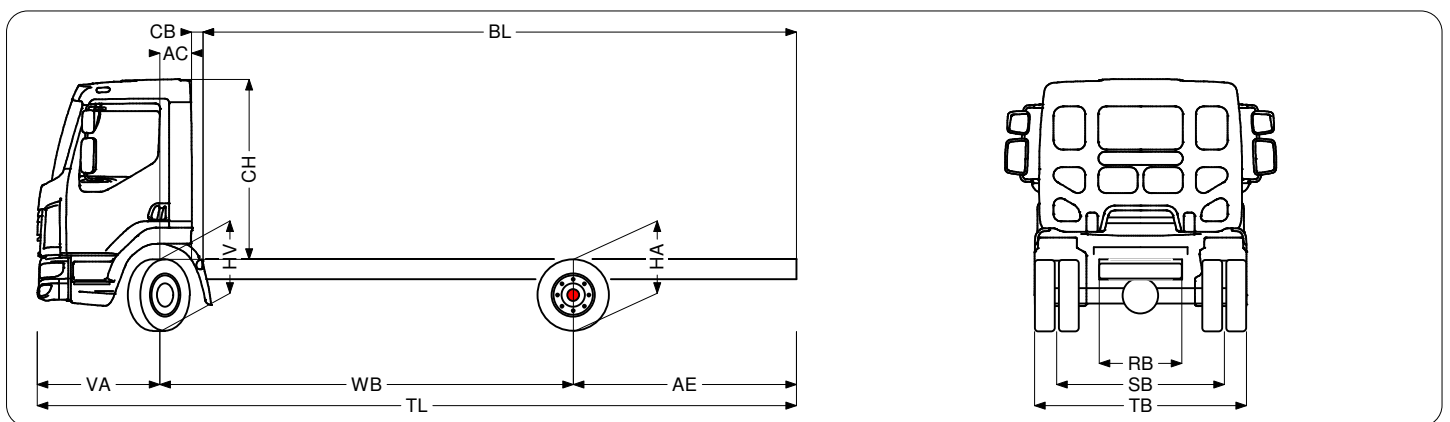
7500 kg
 Max. front¹⁾: 3600 kg
 Max. rear: 5000 kg

GCM

11000 kg

Wheelbase - AE		Unladen weight ²⁾			Gross Carrying Capacity			Variable dimensions										
WB	AE ³⁾	Front	Rear	Total	Front	Rear	Total	AC	CB ⁴⁾	CH ⁵⁾	BL ⁶⁾	BL ⁶⁾	TL	HA ⁷⁾	HA ⁹⁾	TK ⁹⁾	TW ¹⁰⁾	
Day Cab																		
3.05	1.80	2244	790	3034	1356	4210	4466	0.33	0.12	1.87	3.30	4.40	6.13	0.89	0.75	10.18	11.72	
3.15	1.62	2249	780	3029	1351	4220	4471	0.33	0.12	1.87	3.50	4.50	6.05	0.89	0.75	10.42	11.97	
3.55	1.87	2260	804	3064	1340	4196	4436	0.33	0.12	1.87	4.00	5.20	6.70	0.89	0.75	11.40	12.96	
3.90	2.12	2260	819	3079	1340	4181	4421	0.33	0.12	1.87	4.50	5.70	7.30	0.89	0.75	12.25	13.83	
4.30	2.32	2261	833	3094	1339	4167	4406	0.33	0.12	1.87	5.00	6.40	7.90	0.89	0.75	13.23	14.83	
4.65	2.65	2266	858	3124	1334	4142	4376	0.33	0.12	1.87	5.50	6.90	8.57	0.89	0.75	14.09	15.70	
5.00	2.36	2281	853	3134	1319	4147	4366	0.33	0.12	1.87	6.00	7.50	8.64	0.89	0.75	14.95	16.57	
5.40	2.32	2291	853	3144	1309	4147	4356	0.33	0.12	1.87	6.50	8.10	8.99	0.89	0.75	15.94	17.57	
Sleeper Cab																		
3.55	1.87	2375	824	3199	1225	4176	4301	0.73	0.07	1.87	3.40	4.80	6.70	0.89	0.75	11.40	12.96	
3.90	2.12	2375	839	3214	1225	4161	4286	0.73	0.07	1.87	3.90	5.40	7.30	0.89	0.75	12.25	13.83	
4.30	2.32	2376	848	3224	1224	4152	4276	0.73	0.07	1.87	4.50	6.00	7.90	0.89	0.75	13.23	14.83	
4.65	2.65	2386	873	3259	1214	4127	4241	0.73	0.07	1.87	5.00	6.60	8.57	0.89	0.75	14.09	15.70	
5.00	2.36	2401	868	3269	1199	4132	4231	0.73	0.07	1.87	5.50	7.20	8.64	0.89	0.75	14.95	16.57	
5.40	2.32	2411	868	3279	1189	4132	4221	0.73	0.07	1.87	6.10	7.80	8.99	0.89	0.75	15.94	17.57	

Other dimensions VA: 1.27 HV¹¹⁾: 0.79 HV¹²⁾: 0.72 RB: 0.86 SB: 1.74 TB: 2.20



1) Axle load with standard tyre size.
 2) Chassis and Cab Weight calculated with: Standard specification items only with 11 litres of fuel, 15 litres of AdBlue and driver of 0 kg, tolerance ± 3%. Changing of the specification can have major impact on vehicle weight.
 3) Other AE dimensions may be available for shown WB. Modify rear overhang to the calculated body length.
 4) CB is based on standard air intake and/or exhaust.
 5) Cab height is measured from frame member to closed cabin roof hatch.
 6) Calculate customer specific body length with TOPEC. Body lengths shown based on evenly distributed load at max axle load.
 7) Unladen height at centre of driven axle(s).
 8) Laden height at centre of driven axle(s).
 9) TK = turning circle between kerbs.
 10) TW = turning circle between walls.
 11) Unladen height at centre of front axle(s).
 12) Laden height at centre of front axle(s).

LF 150

FA 4x2 rigid, 08t

Cab exterior

Day Cab with steel bumper, tinted glass and electric window openers. Main mirrors and wide angle mirrors electrically heated. Cab width 2130 mm; Front view mirror; Electrically adjustable mirrors.

Optional:

- Extended Day Cab
- Sleeper Cab
- Cab suspension mechanical
- Cab suspension mechanical reinforced
- Fog lights
- Fog lights and cornering lights

Aerodynamics

Optional:

- Side collars
- Side collars prepared
- Various types of roofspoilers and settings

Colours

Cab colour H3279 Brilliant White; Head lamp panel and bumper: Stone Grey; Chassis colour grey.

Optional:

- Head lamp panel and bumper: cab colour
- Various cab and chassis colours see colour guide

Cab interior

Driver seat: air suspended; Co-driver seat: fixed velour; Storage box on engine tunnel.

Optional:

- Air bag (driver) and 2 seat belt tensioners
- Steering wheel, black leather
- Roof hatch, manual control
- Roof hatch, electric control
- Lower bunk, normal level
- Auxiliary cab heater Air Top 2000
- Air conditioning
- Various types of drivers and co-drivers seats

Communication and driving management

FMS connector prepared; Tachograph digital, Stoneridge.

Optional:

- Various makes and types of audio equipment
- TruckPhone

Safety and security

Vehicle Stability Control (VSC); Basic engine immobiliser system.

Optional:

- Reverse warning
- Various packages of EC-ADR safety regulations

Suspension and axles

Front: 3.60 t, parabolic, F36; Rear: 5.00 t, parabolic, SR5.10.

Optional:

- Front springs parabolic raised, Heavy Duty
- Rear axle SR5.14
- Rear axle SR8.22
- Rear springs air
- Rear springs parabolic raised, Heavy Duty
- Rear springs parabolic, asymmetric
- Rear springs parabolic, Heavy Duty
- Rear springs parabolic, raised

Wheels and tyres

Front axle 1: 215/75R17.5; Rear axle 1: 215/75R17.5; Wheel protection rings silvergrey.

Optional:

- Various tyre makes and types

Driveline

Engine PX-5, 4 cylinder diesel engine, 4.5 litres. Output 112 kW (152 hp) at 1800-2300 rpm. Max. torque 580 Nm at 1100-1800 rpm; Exhaust emission Euro 6; Manual gearbox, 5 speeds; Gearbox ratio 5.72-0.76; Rear axle ratio 3.73.

Optional:

- AS Tronic gearbox, 6 speeds
- Manual gearbox, 6 speeds

Brake system

Exhaust brake; DAF brake system.

Chassis

Wheelbase 4.30 m / rear overhang 2.32 m; Side member height 210 mm; DPF/SCR unit right, discharge right; Plastic fuel tank 110 l; Spray suppression; AdBlue tank 25 litres, right side chassis.

Optional:

- Spare wheel carrier in rear overhang
- Spare wheel carrier right-hand side
- Rear light with LEDs

Drawbar and trailer equipment

Closing member.

Optional:

- D-value cross member D=7

Bodies and preparations for bodying

Application connector on the cab front.

Optional:

- Application connector for hydraulic platform
- Application connector for refuse collector
- Application connector for tail lift control
- Application connector on the chassis
- Body attachment BAM 1, consoles type B

Power take-off (PTO)

Optional:

- Indirect front engine PTO
- Various types of PTO's / position combinations

Electrical power supply

Alternator 80 A, batteries 2x 125 Ah.

Optional:

- Alternator 100 A
- Batteries 2x175Ah

GVM and GCM

Technical GVM max 7500 kg; Technical GCM equal to GVM+3500 kg.

Optional:

- Technical GCM equal to GVM
- Technical GCM max 18000 kg
- Technical GCM max 16000 kg

Application conditions

Moisture separator, unheated; Air intake low.

Optional:

- Cold climate
- Air intake on the cab roof

Service and maintenance

Standard Warranty takes care of 1 year complete vehicle, 2nd year driveline and 1 year breakdown; ITS service.

Vehicle delivery

Standard toolkit.

Depending on the vehicle configuration a specific option may not be possible. The availability and specification of this vehicle may differ per country. For further information please contact the DAF organisation. Subject to modification without prior notice.