

# SUMMARY OF OECD TEST 1610—NEBRASKA SUMMARY 217

## WHITE 6045 DIESEL

### 16 SPEED

#### POWER TAKE-OFF PERFORMANCE

Power HP (kW)	Crank shaft speed rpm	Gal/hr (l/h)	lb/hp.hr (kg/kW.h)	Hp.hr/gal (kW.h/l)	Mean Atmospheric Conditions
<b>MAXIMUM POWER AND FUEL CONSUMPTION</b>					
<b>Rated Engine Speed (PTO speed 612 rpm)</b>					
45.7 (34.1)	2354	2.75 (10.42)	0.421 (0.256)	16.60 (3.27)	
<b>Standard Power Take-off speed (540 rpm)</b>					
44.1 (32.9)	2077	2.55 (9.64)	0.404 (0.246)	17.31 (3.41)	

#### VARYING POWER AND FUEL CONSUMPTION

45.7 (34.1)	2354	2.75 (10.42)	0.421 (0.256)	16.60 (3.27)	Air temperature
39.7 (29.6)	2415	2.48 (9.37)	0.436 (0.265)	16.04 (3.16)	66°F (19°C)
30.0 (22.4)	2443	2.04 (7.74)	0.477 (0.290)	14.67 (2.89)	Relative humidity
20.1 (15.0)	2460	1.56 (5.91)	0.542 (0.330)	12.89 (2.54)	62%
10.2 (7.6)	2500	1.18 (4.46)	0.809 (0.492)	8.64 (1.70)	Barometer
.....	2552	0.87 (3.31)	.....	.....	29.8" Hg (101.1 kPa)

Maximum Torque 132.1 lb.-ft. (179.2 Nm) at 1249 rpm  
 Maximum Torque Rise 29.5%  
 Torque rise at 1850 engine rpm 16%

#### DRAWBAR PERFORMANCE

##### FUEL CONSUMPTION CHARACTERISTICS

Power Hp (kW)	Drawbar pull lbs (kN)	Speed mph (km/h)	Crank- shaft speed rpm	Slip %	Fuel Consumption lb/hp.hr (kg/kW.h)	Hp.hr/gal (kW.h/l)	Temp. °F (°C) cool- ing med	Air dry bulb	Barom. Hg (kPa)
<b>75% of Pull at Maximum Power Five Hours 10th (1FH) Gear</b>									
30.3 (22.6)	2400 (10.67)	4.73 (7.62)	2420	3	0.554 (0.337)	12.62 (2.49)	air cld	46 (8)	29.5 (100.0)

##### MAXIMUM POWER IN SELECTED GEARS

7th (4NL) Gear									
32.7 (24.4)	5115 (22.75)	2.40 (3.86)	2397	15	0.546 (0.332)	12.80 (2.52)	air cld	41 (5)	29.6 (100.2)
8th (4NH) Gear									
36.5 (27.2)	4340 (19.30)	3.15 (5.07)	2350	8	0.528 (0.321)	13.24 (2.61)	air cld	41 (5)	29.6 (100.1)
9th (1FL) Gear									
38.8 (28.9)	4100 (18.24)	3.55 (5.70)	2350	8	0.500 (0.304)	14.01 (2.76)	air cld	41 (5)	29.6 (100.2)
10th (1FH) Gear									
39.0 (29.1)	3210 (14.27)	4.56 (7.34)	2350	4	0.494 (0.301)	14.14 (2.79)	air cld	43 (6)	29.5 (100.0)
11th (2FL) Gear									
38.0 (28.3)	2455 (10.91)	5.80 (9.34)	2351	4	0.506 (0.308)	13.81 (2.72)	air cld	41 (5)	29.5 (100.0)
12th (2FH) Gear									
37.2 (27.7)	1860 (8.29)	7.49 (12.04)	2350	2	0.518 (0.315)	13.50 (2.66)	air cld	43 (6)	29.5 (100.0)
13th (3FL) Gear									
34.1 (25.4)	1320 (5.88)	9.67 (15.57)	2350	1	0.565 (0.343)	12.38 (2.44)	air cld	43 (6)	29.5 (100.0)

#### TRACTOR SOUND LEVEL WITHOUT CAB

**dB(A)**

Maximum sound level - in 10th (1FH) gear	94.6
Bystander in 16th (4FH) gear	81.4

**Location of Test:** ISMA Via Milano 43, 24047 Treviglio BG Italy

**Dates of Test:** February, 1996

**Manufacturer:** S+L+H S.p.A. V.le F. Cassani 15, 24047 Treviglio BG Italy

**FUEL OIL and TIME:** Fuel No. 2 Diesel Cetane No. NA Specific gravity converted to 60°/60° F (15°/15°C) 0.839 Fuel weight 6.99 lbs/gal (0.838 kg/l) Oil SAE 30 API service classification SE/CD Oil consumption for 10 hours 0.57 lb (260 gm) Transmission and hydraulic lubricant AKROS Multi 95 fluid Front axle lubricant SAE 95 API GL-4

**ENGINE:** Make S+L+H Diesel Type three cylinder vertical Serial No. 1732 Crankshaft lengthwise Rated engine speed 2350 Bore and stroke 4.134" x 4.547" (105 mm x 115.5 mm) Compression ratio 17.1 to 1 Displacement 183 cu in (3000 ml) Starting system 12 volt Lubrication pressure Air cleaner two paper elements Oil filter one full flow cartridge Oil cooler radiator for crankcase oil Fuel filter one paper element Muffler vertical Cooling medium temperature control air cooled

**CHASSIS:** Type front wheel assist Serial No. 001032 Tread width rear 51.8" (1315 mm) to 55.5" (1410 mm) front 52.8" (1340 mm) to 60.6" (1540 mm) Wheel base 80.9" (1926 mm) Hydraulic control system direct engine drive Transmission selective gear fixed ratio Nominal travel speeds mph (km/h) first 0.70 (1.13) second 0.86 (1.39) third 1.11 (1.78) fourth 1.37 (2.21) fifth 1.76 (2.83) sixth 2.17 (3.50) seventh 2.78 (4.48) eighth 3.45 (5.56) ninth 3.85 (6.20) tenth 4.77 (7.68) eleventh 6.10 (9.82) twelfth 7.58 (12.20) thirteenth 9.75 (15.69) fourteenth 12.08 (19.44) fifteenth 15.47 (24.89) sixteenth 19.01 (30.60) reverse 0.82 (1.32), 1.30 (2.10), 2.07 (3.33), 3.27 (5.26), 4.53 (7.29), 7.20 (11.59), 11.48 (18.48), 18.12 (29.17) Clutch single dry disc operated by foot pedal Brakes wet multiple disc hydraulically operated by two foot pedals which can be locked together Steering hydrostatic Power take-off 540 rpm at 2077 engine rpm Unladen tractor mass 4885 lb (2215 kg)

**REPAIRS AND ADJUSTMENTS:** No repairs or adjustments

**CENTER OF GRAVITY**

Horizontal distance forward from centerline of rear wheels	33.1 in (841 mm)
Vertical distance above roadway	30.5 in (774 mm)
Horizontal distance from center of rear wheel tread	0.2 in (6 mm) to the left

**REMARKS:** All test results were determined from observed data obtained in accordance with official OECD test procedures. The performance results on this summary were taken from OECD tests conducted under the Code I Standard Test Code procedure.

**TURNING ON A CONCRETE SURFACE**

Turning radius - with brake applied right 134° (3.40 m) left 140° (3.56 m)
- without brake right 150° (3.80 m) left 159° (4.03 m)
Turning space radius - with brake applied right 138° (3.51 m) left 144° (3.67 m)
- without brake right 154° (3.91 m) left 162° (4.14 m)

We, the undersigned, certify that this is a true summary of data from OECD Report No. 1610, Nebraska Summary 217, September 23, 1998.

LEONARD L. BASHFORD  
Director

**TIRES, BALLAST AND WEIGHT**

	With Ballast	Without Ballast
<b>Rear Tires</b>	Two 14.9R28; 6;23 (160)	Two 14.9R28; 6;23 (160)
<b>Ballast</b>	None	None
- No., size, ply & psi (kPa)	Two 11.2R20; 6;23 (160)	Two 11.2R20; 6;23 (160)
- Liquid (total)	None	None
- Cast iron (total)	340 lb (155 kg)	None
<b>Front Tires</b>	Two 11.2R20; 6;23 (160)	Two 11.2R20; 6;23 (160)
<b>Ballast</b>	None	None
- No., size, ply & psi (kPa)	330 lb (150 kg)	None
- Liquid (total)	None	None
- Cast Iron (total)	None	None
<b>Height of Drawbar</b>	17.8 in (451 mm)	17.9 in (455 mm)
<b>Static Weight with Operator</b> --Rear	3165 lb (1435 kg)	2845 lb (1290 kg)
--Front	2555 lb (1160 kg)	2205 lb (1000 kg)
--Total	5720 lb (2595 kg)	5050 lb (2290 kg)

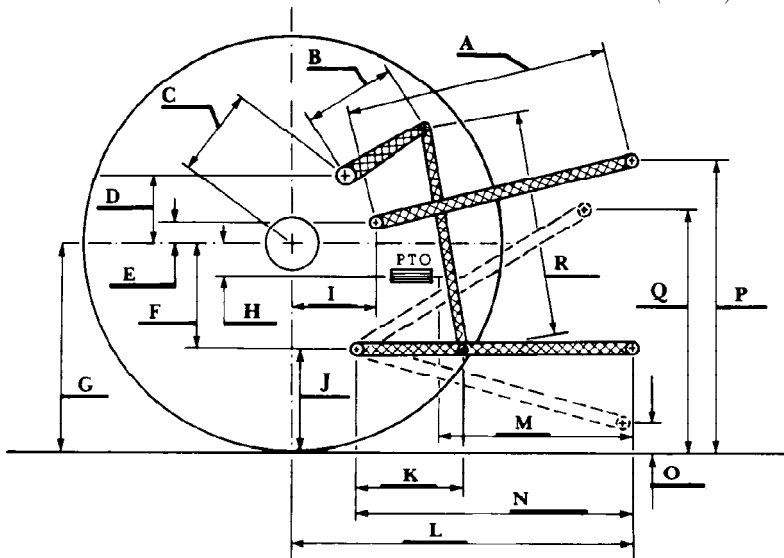
M.F. KOCHER  
R.D. GRISSO  
G.J. HOFFMAN  
Board of Tractor Test Engineers

**THREE POINT HITCH PERFORMANCE (OECD Static Test)**

CATEGORY: II

Quick Attach: None

Maximum Force Exerted Through Whole Range:	3830 lbs	(17.0 kN)
i) Opening pressure of relief valve:	NA	
Sustained pressure with relief valve open:	2610 psi	(180 bar)
ii) Pump delivery rate at minimum pressure and rated engine speed:	12.5 GPM	(47.4 l/min)
iii) Pump delivery rate at maximum hydraulic power:	11.1 GPM	(42.0 l/min)
Delivery pressure:	2180 psi	(150 bar)
Power:	14.1 HP	(10.5 kW)



**HITCH DIMENSIONS AS TESTED NO LOAD**

	inch	mm
A	23.3	593
B	9.8	250
C	14.2	361
D	12.4	315
E	13.2	335
F	6.1	154
G	25.2	640
*H	1.2	30
I	15.4	390
J	19.1	486
K	15.7	400
L	38.7	983
M	21.4	543
N	31.5	800
O	7.9	200
P	43.1	1096
Q	35.8	910
R	23.2	590

\* PTO is above rear axle

Agricultural Research Division  
Institute of Agriculture and Natural Resources  
University of Nebraska Lincoln  
Darrell Nelson, Dean and Director